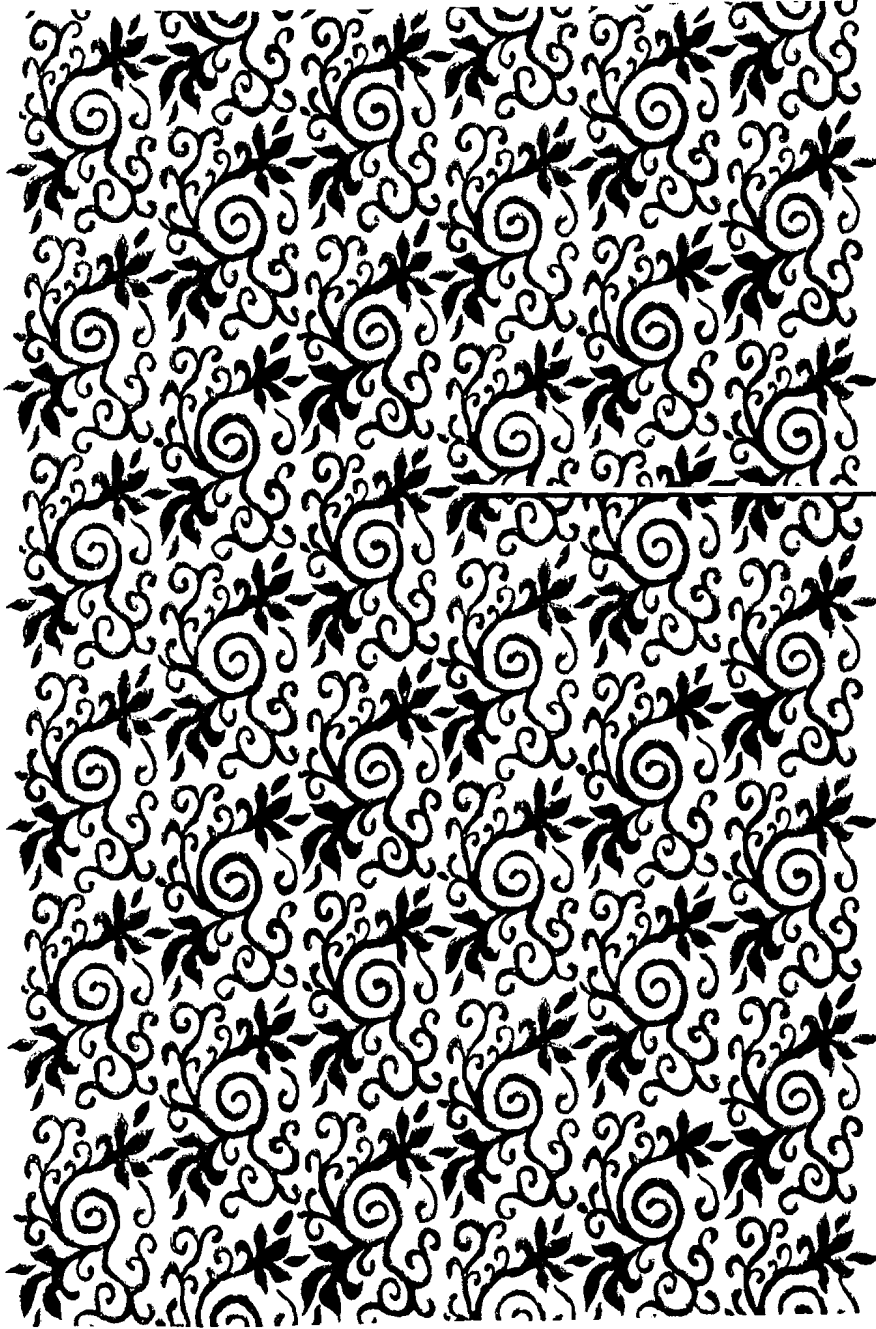
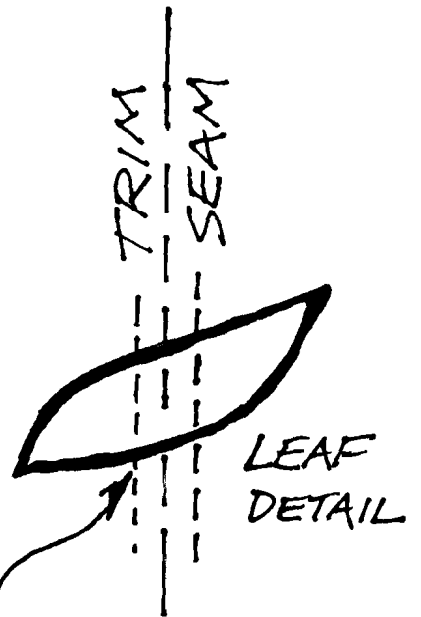
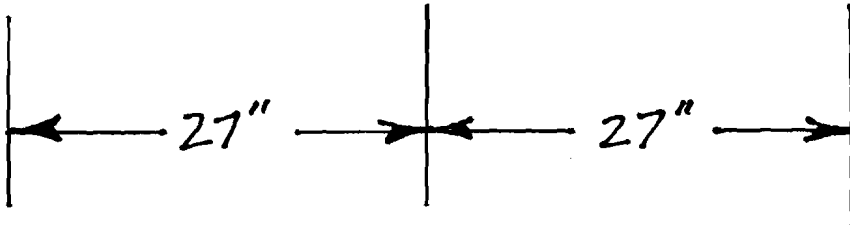


PANEL #1

PANEL #2



HALF DROP MATCH



CARRY OVER PROVIDED - TRIM OFF

# “ TRANSITION ”

Thank you for purchasing this unique hand-crafted wallpaper. This wallpaper is made entirely by hand and has been designed with an inherent variation of shading and irregularity. This includes variation in the depth of the embossed texture. These are not considered defects; rather, they are the beauty of a hand-made product. Note: Fingerprints on the edges of the paper are not defects, the edges will be trimmed off in the installation process.

**Please read these instructions thoroughly before beginning installation.**

Please keep the wallpaper stored in an upright position to avoid compression dents. The repeat of the wallpaper is **13 ½ inches** with a **Half Drop Match**. This paper will panel slightly, but that is not considered a defect.

This wallpaper is 30 inches wide and is **NOT pre-trimmed**. Because this is a handmade product, the selvages may not be even and trim width may vary from sheet to sheet. For best results, overlap the selvages and double cut directly on the wall. The pattern crosses over the selvaige in only one area. (refer to diagram on back side) Generally, you need to cut the leaf shape from top to bottom in the exact center. The leaf extends out beyond the 27 inch width in these areas to ensure you will not have a gap in your side to side match. The finished width of the paper should be approx. 27 inches wide, however, you can make adjustments up to 1/8 inch vertically or horizontally to achieve the best match. We advise using a level to keep the pattern from drifting diagonally. Use a heavy-duty blade to cut this wallpaper, and replace the blade often to ensure the best cut.

Walls must be properly primed and prepared before hanging wallpaper. “Shieldz” is a good wallpaper base primer. Primer helps adhesion and makes the removal of the wallpaper easier when necessary. Use only a pre-mixed clear vinyl adhesive such as Roman Adhesive PRO-880. You may paste the wall if you prefer. **DO NOT** allow paste to dry on the front of the paper. This will discolor the ink over time. Remove any paste with a clean, damp (**NOT WET**) sponge and rinse again. Do not allow water to remain on the surface of the paper for a prolonged period of time. Avoid using sharp metal tools to install this paper, which may also gouge and scratch the surface. Do not overwork the seams. Add a little extra paste to the back of the seams to ensure that they seal well and lay flat.

**The environmental lighting of your installation may create an illusion of shading due to the light reflective quality of the pearlescent and metallic inks.**

## RETURNS

Test hang 3 strips of paper. If any defects are found, do not install the wallpaper. Return the entire shipment to us for inspection. No adjustments will be made until we have inspected the returned wallpaper. If found by us to be defective, we will make prompt adjustments. If we determine that the goods are not defective, we will charge a 25% restocking fee. **Be sure that what you see as a defect is not an inherent irregularity or the textured effect of this hand-made wallcovering.** We are not responsible for cut or hung material or labor charges. **No returns or will be accepted after 30 days from ship date.** **ABSOLUTELY NO CLAIMS OR ADJUSTMENTS AFTER MORE THAN 3 STRIPS OF PAPER HAS BEEN HUNG.**

**TO CLEAN: Wipe surface gently with a damp cloth and mild detergent.**

**This paper is NOT resistant to harsh chemicals and abrasion.**